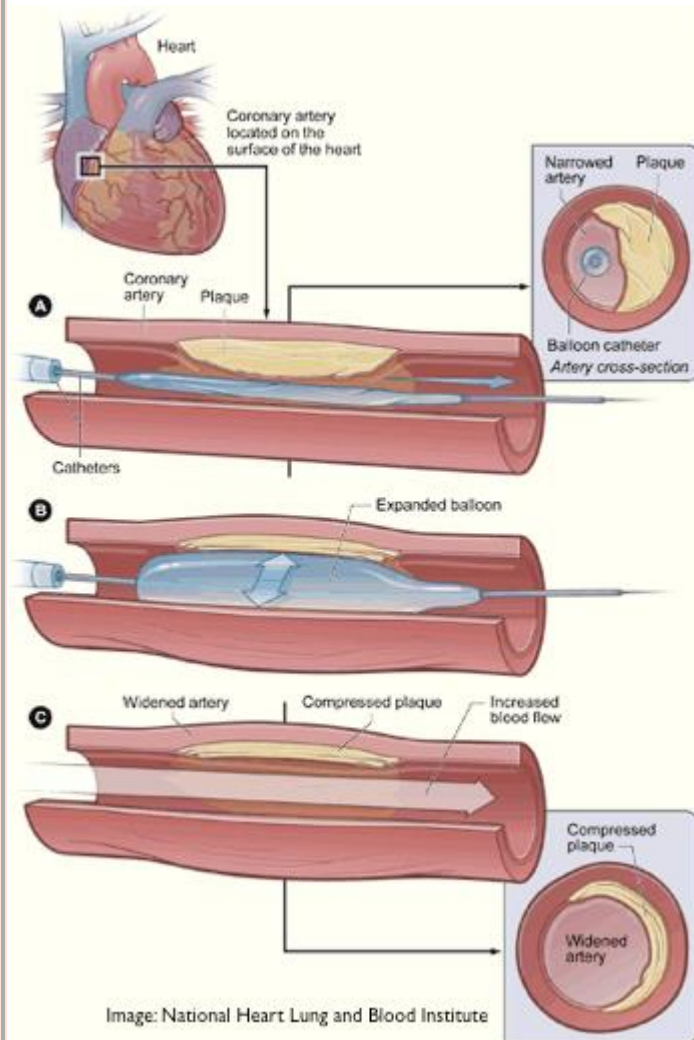


Hemet Heart Medical Center Patient Education



What is a Coronary Stent?

- A Coronary stent is a mesh tube that is used to open narrowed coronary arteries.
- Narrowing or hardening of the arteries occurs because of the buildup of a fatty substance called plaques. The buildup of plaques occurs over time and is a condition known as atherosclerosis.

Why is the procedure done?

- It is done to improve blood flow to the heart.
- This procedure can improve symptoms of chest pain and shortness of breath.
- A stent can also be placed in a weakened artery to improve blood flow and prevent the artery from bursting.

How is a Coronary Stenting Procedure done?

- A stent may be placed in an artery as part of a Coronary Angioplasty procedure. An Angioplasty procedure involves a balloon catheter inflated in a blocked artery to widen the artery and thus allow increased blood flow through the artery.
- A stent is a mesh tube that may then be placed in the artery to prevent it from narrowing or becoming blocked again in the future.

For more Information..

visit the [National Heart Lung and Blood Institute](https://www.nhlbi.nih.gov/)