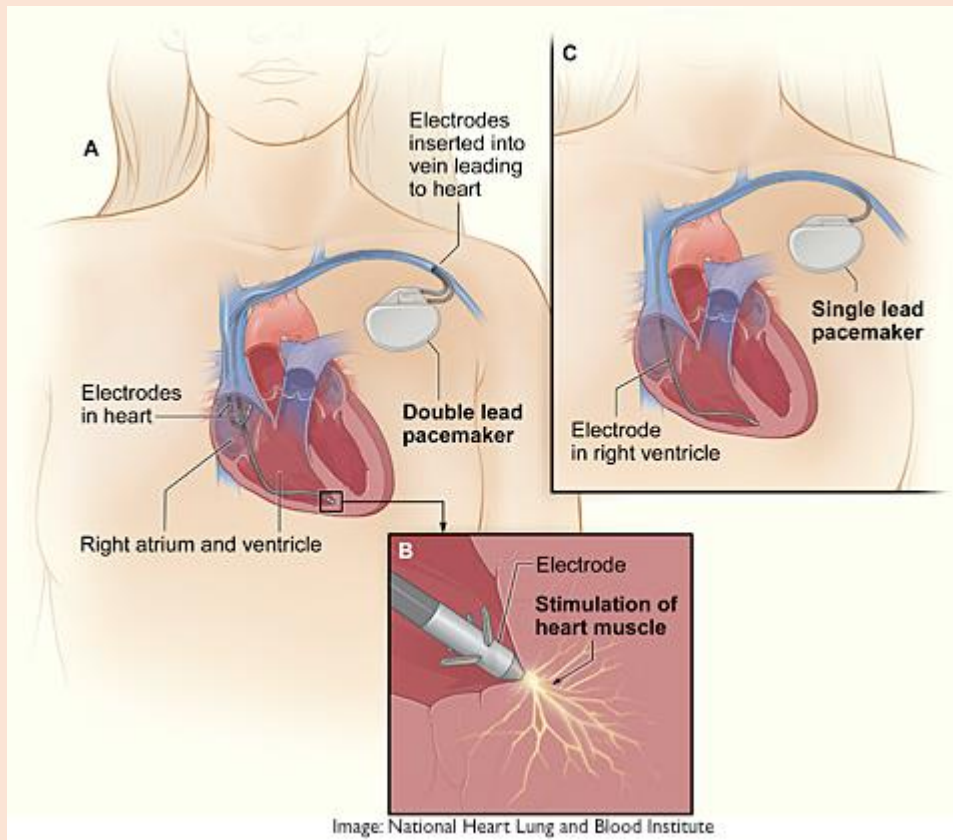


Hemet Heart Medical Center Patient Education



Basic Facts

A pacemaker is a small device that is placed under the skin of your chest or abdomen to help control arrhythmias, or irregular heartbeats. This device uses electrical pulses to prompt the heart to beat at a normal rate.

A pacemaker may be recommended if aging, heart disease, or other factors make your heart beat too slow, too fast, or irregularly. Symptoms such as fainting, shortness of breath, and fatigue may result from an irregular heart beat, all which can be corrected by a pacemaker.

A pacemaker consists of a battery, a computerized generator and wires. The generator sends electrical pulses that correct or set your heart rhythm, and the wires carry electrical pulses to and from the heart chambers and the generator.

Pacemaker insertion is usually a straightforward outpatient procedure. Once the pacemaker is fully adjusted the patient should be able to carry out all the functions of normal daily life and the pacemaker will automatically adapt to various circulation and heart beat needs.

For more Information..

visit the [National Heart, Lung, and Blood Institute](http://www.nhlbi.nih.gov)

or play the following video on the Human Heart and Pacemaker